



Vlaanderen
verbeelding werkt

CULTURE TALKS

COMMONS

Antwerpen | 6 december 2022

DEPARTEMENT
CULTUUR, JEUGD & MEDIA

www.vlaanderen.be/culturetalks

OPEN ACCESS IS JUST THE FIRST STEP

How to build relevance and democratic engagement with open cultural heritage

Gastspreeker: Merete Sanderhoff

Curator bij het Deense Staatsmuseum voor Kunst en auteur van 'Sharing is Caring'

Making COMMON SENSE

with our shared cultural heritage

Common Sense, Antwerp
6 December 2022

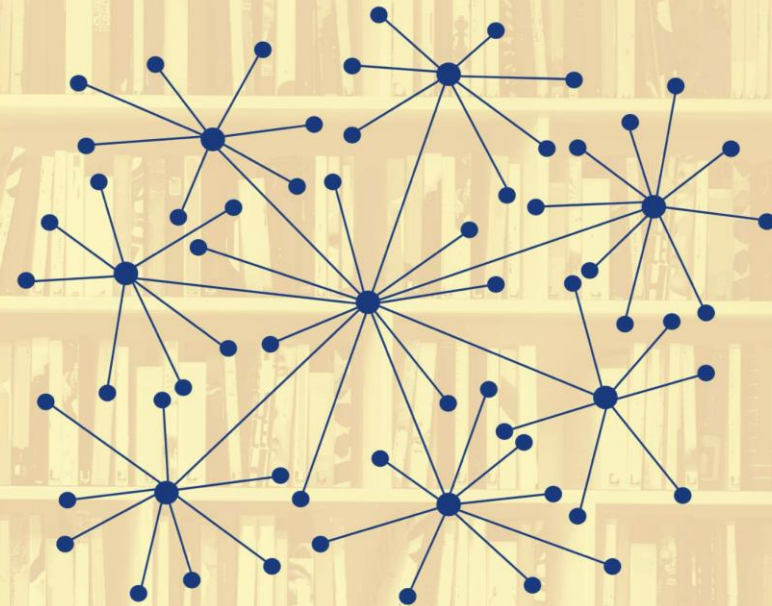
New Dark Age

Technology
and the
End of the
Future

James Bridle

'Brilliant and bracing' – *Guardian*

"A powerful argument for the right of all of us to know. . .
This is a book that will spearhead debate in the twenty-first century."
—ALICE KESSLER-HARRIS,
R. Gordon Hoxie Professor of History, Emerita, Columbia University

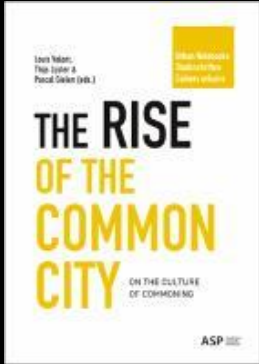


THE NEW ENLIGHTENMENT

and the fight to free knowledge

PETER B. KAUFMAN

New obligations for GLAMs in a digitized society



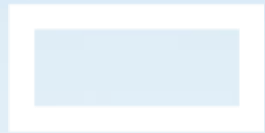
“

Cultural spaces (...) are asylums for culture – which is what gives meaning to our individual and collective lives – and permanent laboratories where new forms of political participation and self-organization are experimented with.

EU policies [should] value culture as a tool to give people – and particularly disadvantaged ones – powers of expression and decision-making able to truly change everyone’s living conditions.

”

SMK



Statens Museum for Kunst
National Gallery of Denmark



National Gallery of Denmark
Western art from 1300 to present day
260,000 artworks
66 % in public domain

We want to be a catalyst
of users' creativity

SMK's first digital strategy
2008

SMK



Statens Museum for Kunst
National Gallery of Denmark



Democratization

“

Through encounters with the art, SMK paves the way for experiences and bold conversations that include more – and more diverse – citizens. SMK wants to build and strengthen communities where we, as humans, can reflect on our own being, on each other, and the world we are all part of.

“

The museum as a platform
for cultural democracy

Our online collection is a key resource
open.smk.dk

🔍 What are you looking for?

E.g. cat, Hammershøi, nature

Title

**Portræt af Cecilie Trier, f.
Melchior (1885)**

Artist

Bertha Wegmann

Work type

Maleri

Color



Artist

Work type

Color

Increased democratic searchability
through AI and machine learning

Filters

What are you looking for?

E.g. cat, Hammershøi, nature

34.765

artworks



Free to use



With photo



With large photo



With 3D



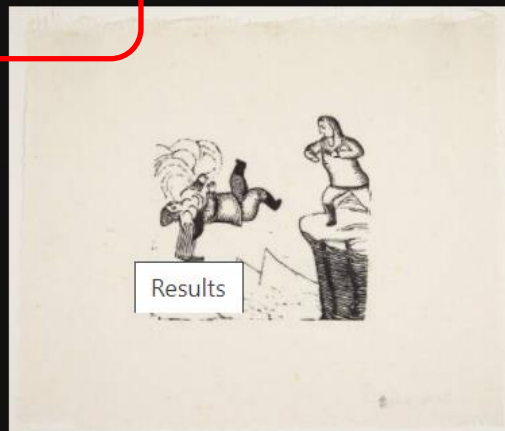
On display at SMK



**Fortællingen om Akigssiak:
Sælhundeboldspillet, hvor
bedstefaderen overvindes, 1859 –
1860, 1933 – 1937**

Markus Lynge

Free to use



**Fortællingen om Akigssiak:
Akigssiak kaster indlandsboen ned
fra et fjeld, 1859 – 1860, 1933 –
1937**

Markus Lynge

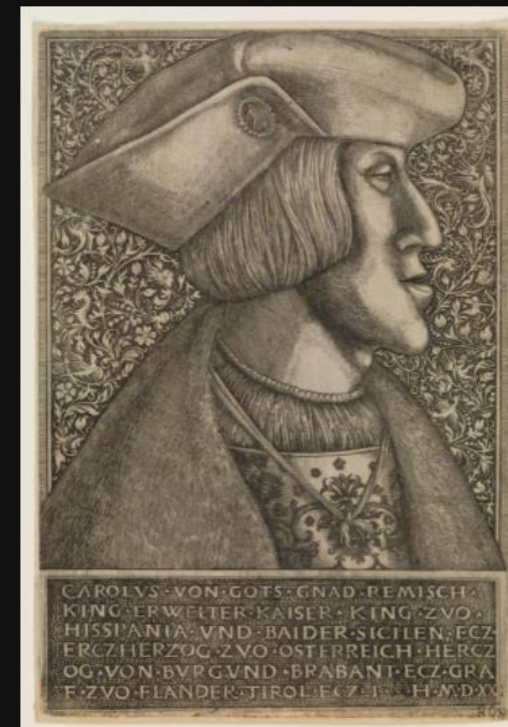
Free to use



**Nordbosagaerne. Fortællingen om
Oungortok: Kasape dræber
høvdingen Oungortok., 1857 –
1861, 1933 – 1937**

Aron fra Kangeq

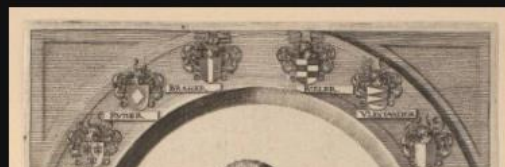
Free to use



**Charles V, German Emperor, 1520 –
1521**

Hieronymus Hopfer, Daniel Hopfer

Free to use



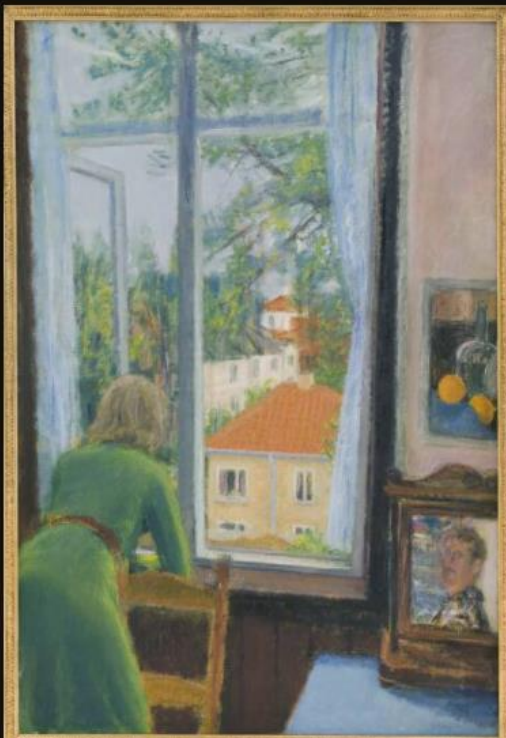
Filters

🔍 window

✕

513 artworks found containing window

513 artworks

☐ Free to use☒ With photo☐ With large photo☐ With 3D☐ On display at SMK

At a Window in the Artist's Studio,
1852



Large "R" in front of Window, 1979

Søren Elgaard

© Søren Elgaard / VISDA



Final Instructions, Entropic Views

Filters

Work

- Work type
- Date
- Material
- Medium
- Techniques
- Acquisition date

Subject

- Portrait of
- Place depicted
- Color

Artist/Maker

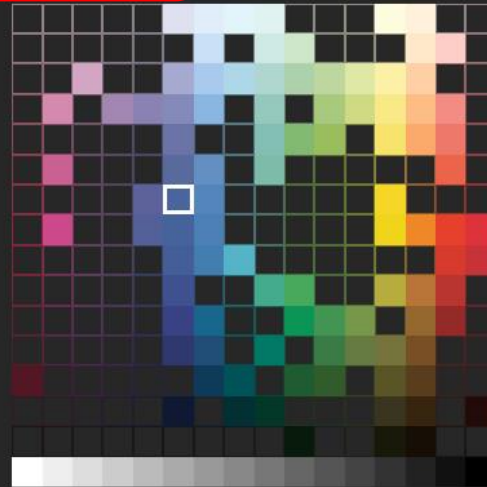
- All persons
- Artist
- Nationality
- Gender

Role

- Attributed to
- Earlier ascribed to

Color

Search based on the colors of the artwork.



38 artworks



Beechy Island #1, 1999

Joachim Koester

© Joachim Koester / VISDA



The Harbour in Århus, 1939

Søren Hjorth Nielsen

© Søren Hjorth Nielsen / VISDA



Stills, 2013

Marie Lund

© Marie Lund / VISDA



Landscape from Bornholm. Summer Evening, 1951

Olaf Rude

© Olaf Rude / VISDA



P.C. Skovgaard

A Beech Wood in May near Iselingen Manor, Zealand

Colors



Free to use



• Top

Related artworks

Audio/Video

About the artwork

Read about the artwork

Exhibitions

References

Ask a question

Title

A Beech Wood in May near Iselingen Manor, Zealand

Artist/maker

P.C. Skovgaard 1817 – 1875

Production date

1857

Inventory number

KMS4580

Number of parts

1

Colors



Work type

Painting

On display in

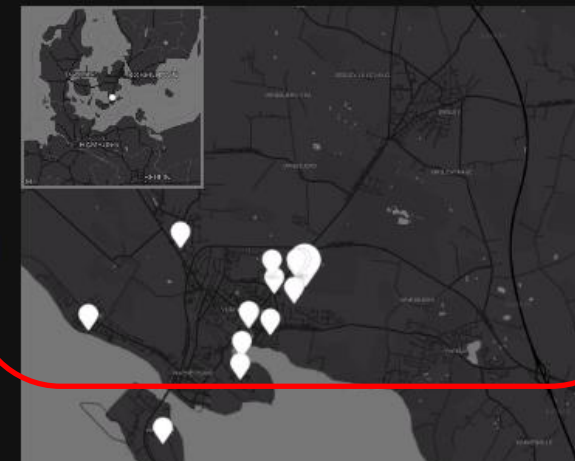
Sal 217F, Buy ticket

Dimensions

189.5cm (h) x 158.5cm (w)

Artworks in same area

18 artworks within 4.4 km. [See map](#)



Filters

What are you looking for?

E.g. cat, Hammershøi, nature

312 artworks

☐ Free to use

☐ With photo

☐ With large photo

☒ With 3D

☐ On display at SMK



Laocoon

Unknown

Free to use



Belvedere Torso

Unknown

Free to use



Hebe, 1816

Unknown

Free to use



Dying Gladiator

Unknown

Free to use



SMK's collection 3D scanned by
volunteers at Scan The World



+ 38,000 images and scans



Facilitating diverse
users' needs and purposes

Community of people from all over the world who want to
learn Danish or help others practice their language skills
Weekly meetups at the museum since 2017-22,
online during Covid19 lockdowns
Conversations centered around 'the common third' – the art



The SMK logo, featuring the letters 'SMK' in a bold, sans-serif font with a small crown icon to the right.

Statens Museum for Kunst
National Gallery of Denmark

FRIDAYS

SMK Fridays

Monthly evening events

Free entrance for all

Turn the museum into an
experimental cross-cultural lab



SMK



Statens Museum for Kunst
National Gallery of Denmark

Collage workshop at SMK Fridays
November 2019

We at SMK

Online forum for young people with cancer

Creative exercises based in SMK artworks

Sharing experiences based in the common third

Partnership with PS! - a writers school

for mentally vulnerable

Vi på SMK



Onlineforløb for unge med kræft 2020-21

FORFATTERSKOLEN PS!



Asger Jorn, modification of a drawing by
Renoir, 1948-49, SMK



in different ways.
We at SMK made *us* get active.”



Emma, participant



Art and Culture for All

Creative workshop at summer camps for socially disadvantaged families

Workshop and tour of SMK for the families

Children's Workshop in-a-bag to take home

150 children and their parents participated in 2021

Reaching families who don't normally relate to museums

SMK



Statens Museum for Kunst
National Gallery of Denmark

Unges
Laboratorier
for Kunst

Young People's Art Labs

Community of young people
Weekly meetups at SMK
Creative interventions based in the collection

SKYEN

Redesign of
injection room
in central Cph





Co-creation between art pilots
and users of Skyen

SMK



Statens Museum for Kunst
National Gallery of Denmark



From sterile anonymity
to ownership and sensemaking
with non-users of museums



Taboo workshop

Make the invisible visible



>100 participants
students 15-19 years

SMK



Statens Museum for Kunst
National Gallery of Denmark

Workshop focus on dialogue,
collaboration and process

Wiki Labs

Bidrag til kulturhistorien



AARHUS
UNIVERSITY



Thorvaldsens
Museum



HIRSCHSPRUNG



KØBENHAVNS
STADSARKIV

Wiki Labs Culture

Monthly meetups physical and virtual
Co-creation of an open knowledge source
Volunteers and heritage professionals
collaborate as peers

SMK

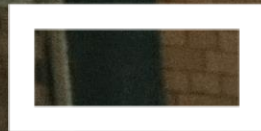


Statens Museum for Kunst
National Gallery of Denmark



The Hirschsprung Collection

SMK

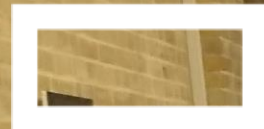


Statens Museum for Kunst
National Gallery of Denmark



SMK – Statens Museum for Kunst

SMK



Statens Museum for Kunst
National Gallery of Denmark

Copenhagen City Archive

SMK



Statens Museum for Kunst
National Gallery of Denmark

The Thorvaldsen Museum

SMK



WIFI
CINEMATEKET-GUEST

Statens Museum for Kunst
National Gallery of Denmark
CHECK IN
PASSWORD
GUEST

The Danish Film Institute



Mer

27.



FREDAG DEN 27. NOVEMBER 2020 KL. 15.00 UTC+01-17.00 UTC+01

Wiki Labs Kultur - online

meet.google.com/zje-uqdy-jec

Om

Debat

✉ Inviter

✎ Rediger

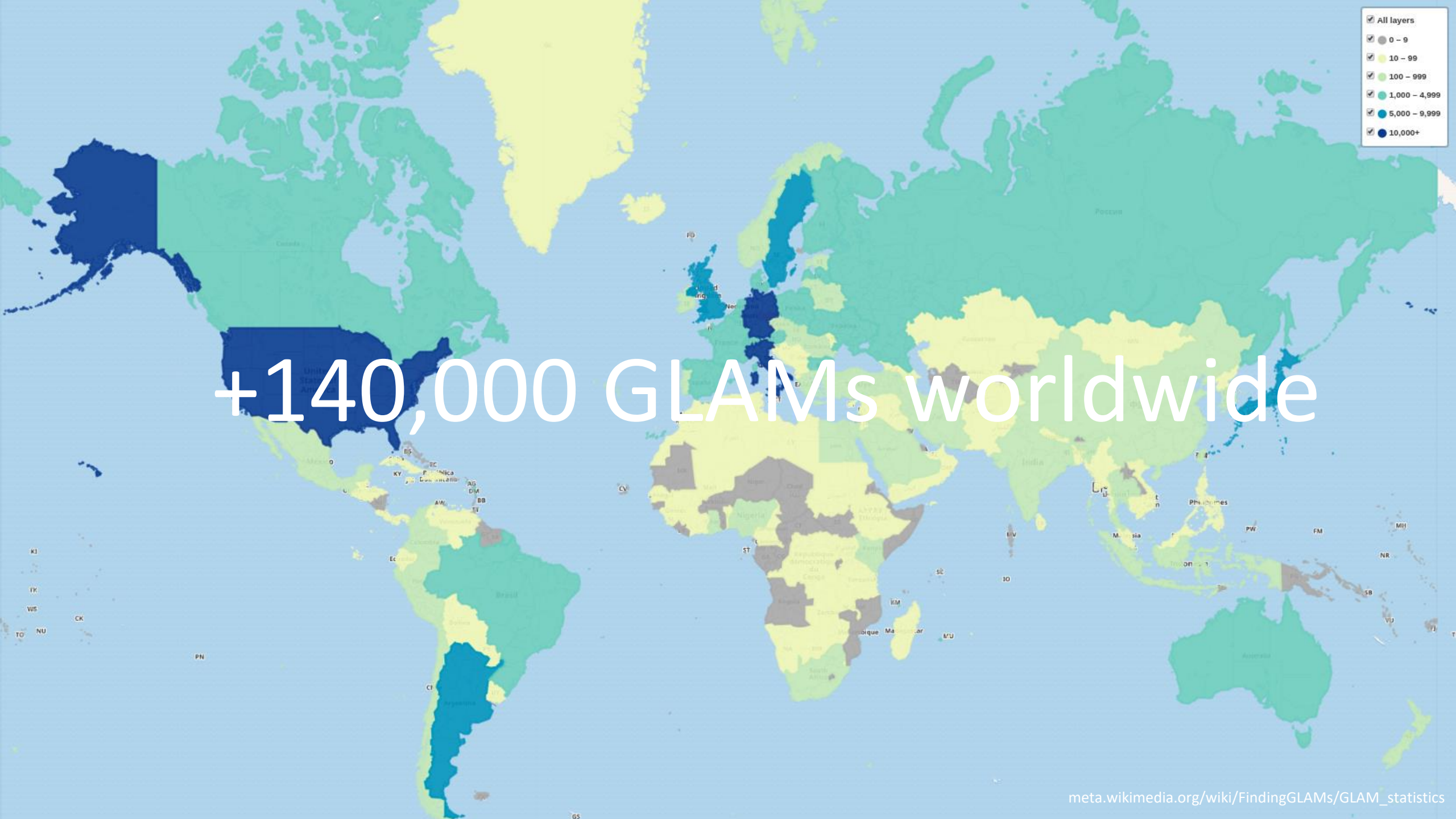


Detaljer

Deltag sammen med venner [Se alle](#)

+37 million page views
per year





SMK



Statens Museum for Kunst
National Gallery of Denmark



© Gemäldegalerie Alte Meister, Staatliche Kunstsammlungen Dresden, Foto: Wolfgang Kreische

[gemaeldegalerie.skd.museum/ausstellungen/
vermeer-johannes-vermeers-dresdner-briefleserin-
am-offenen-fenster-und-die-hollaendische-
genremalerei-des-17-jahrhunderts/](https://gemaeldegalerie.skd.museum/ausstellungen/vermeer-johannes-vermeers-dresdner-briefleserin-am-offenen-fenster-und-die-hollaendische-genremalerei-des-17-jahrhunderts/)



© Gemäldegalerie Alte Meister, Staatliche Kunstsammlungen Dresden, Foto: Wolfgang Kreische

[gemaeldegalerie.skd.museum/ausstellungen/
vermeer-johannes-vermeers-dresdner-briefleserin
-am-offenen-fenster-und-die-hollaendische
-genremalerei-des-17-jahrhunderts/](https://gemaeldegalerie.skd.museum/ausstellungen/vermeer-johannes-vermeers-dresdner-briefleserin-am-offenen-fenster-und-die-hollaendische-genremalerei-des-17-jahrhunderts/)



PUBLIC DOMAIN HULK

@PUBDOMAINHULK

 Tweet to PUBLIC DOMAIN HU

HULK SEE COPYRIGHT ALL RIGHTS
RESERVED ON IMAGE OF MEDIEVAL
MANUSCRIPT. HULK SMASH.

RETWEETS

65

FAVORITES

50



4:29 PM - 11 Nov 2014





How can we get more cultural spaces
to be platforms for political participation,
self-organization and sense-making?



Ethos



Realities



IMPACT PLAYBOOK

For Museums, Libraries, Archives and Galleries

PHASE I: Impact Design

Impact

Cultural spaces for
participation and sense-making
that inspire our work

Demokrati Garage

www.demokratigarage.dk

Velkommen til Demokrati Garage

Demokrati Garage er byens nye demokratihus og mødested for deltagelse. Vi er et moderne gør-det-selv værksted for demokrati, der er drevet af mere og bedre demokrati. Vi hylder mennesker, der bare går i gang og samler fællesskaber, der løser både hverdagens og samfundets største udfordringer.

Læseforeningen

Scandinavian Cello School



Europeana Network Association

We need strong policies
that defend the rights of the public
and increase access and participation

POLICY RECOMMENDATIONS

Find here COMMUNIA's 20 Policy Recommendations for the Public Domain developed between late 2021 and early 2022, and launched in May 2022. These supersede the [14 policy recommendations published in 2011](#) and [evaluated in 2021](#). Our recommendations identify possibilities for reshaping copyright in ways that expand the public domain and strengthen the rights of users and all types of cultural creators. We envision a copyright framework that maximises societal benefits by embracing the possibilities for wider access to knowledge and culture in an increasingly digitised environment.

The policy recommendations focus on four areas: measures to [defend and expand the public domain](#), measures that [protect and promote usage rights](#), measures to [empower creators and their audiences](#) and measures that [create safeguards against copyright abuse](#). Together with the [Public Domain Manifesto](#) they guide our advocacy work.

COMMUNIA's recommendations have been written with an European audience in mind and thus focus on improvements to the EU copyright legislation. Most of the underlying objectives and ideas will also apply in other contexts, however.

3. Works and data produced by the public sector should be in the Public Domain.

Works and data produced by the public sector (such as official texts of a legislative, administrative, or legal nature) are part of an essential commons of information which is too important for the functioning of our societies to be burdened with copyright restrictions even for a limited period. To ensure a consistent and harmonised scope of the Public Domain, Europe needs to ensure that these materials are free from exclusive rights in all Member States.

Article 14 states that faithful reproductions of works of visual art which are in the public domain must stay in the public domain.



DSM Directive

Implementation status of the DSM directive across the EU

See how the 27 Member States compare when implementing the new copyright rules



*countries in grey have not completed their implementations yet

Implementation status of the DSM directive across the EU

See how the 27 Member States compare when implementing the new copyright rules



*countries in grey have not completed their implementations yet

Implementation status of the DSM directive across the EU

See how the 27 Member States compare when implementing the new copyright rules



*countries in grey have not completed their implementations yet

Bedankt voor het woord

Common Sense, Antwerp
6 December 2022



Vlaanderen
verbeelding werkt

CULTURE TALKS

PAUZE

Antwerpen — 6 december 2022

COMMONS

DEPARTEMENT
CULTUUR, JEUGD & MEDIA

www.vlaanderen.be/culturetalks



Vlaanderen
verbeelding werkt

COMMONS-BASED ECONOMIC DEVELOPMENT AS THE NEW PARADIGM OF ECONOMIC DEVELOPMENTS?

Gastspreeker: Michel Bauwens

Oprichter van de P2P Foundation

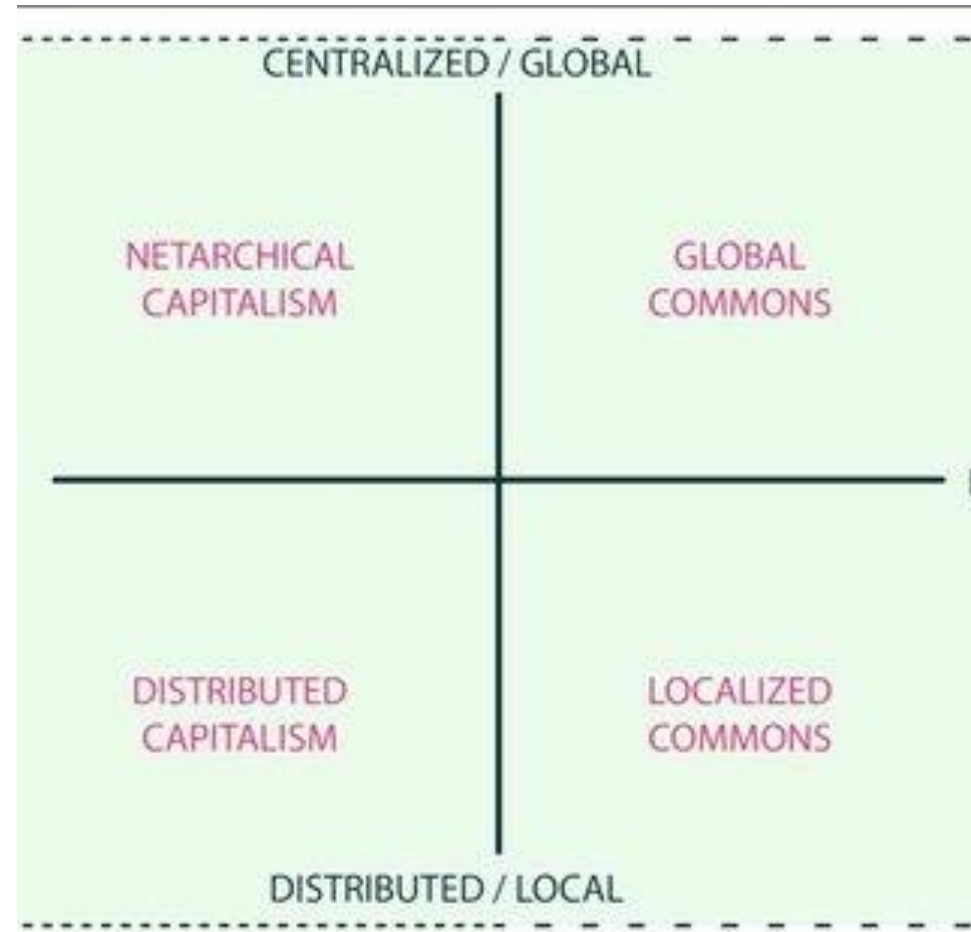
The economy of the commons

Culture Talks, November 6, 2022

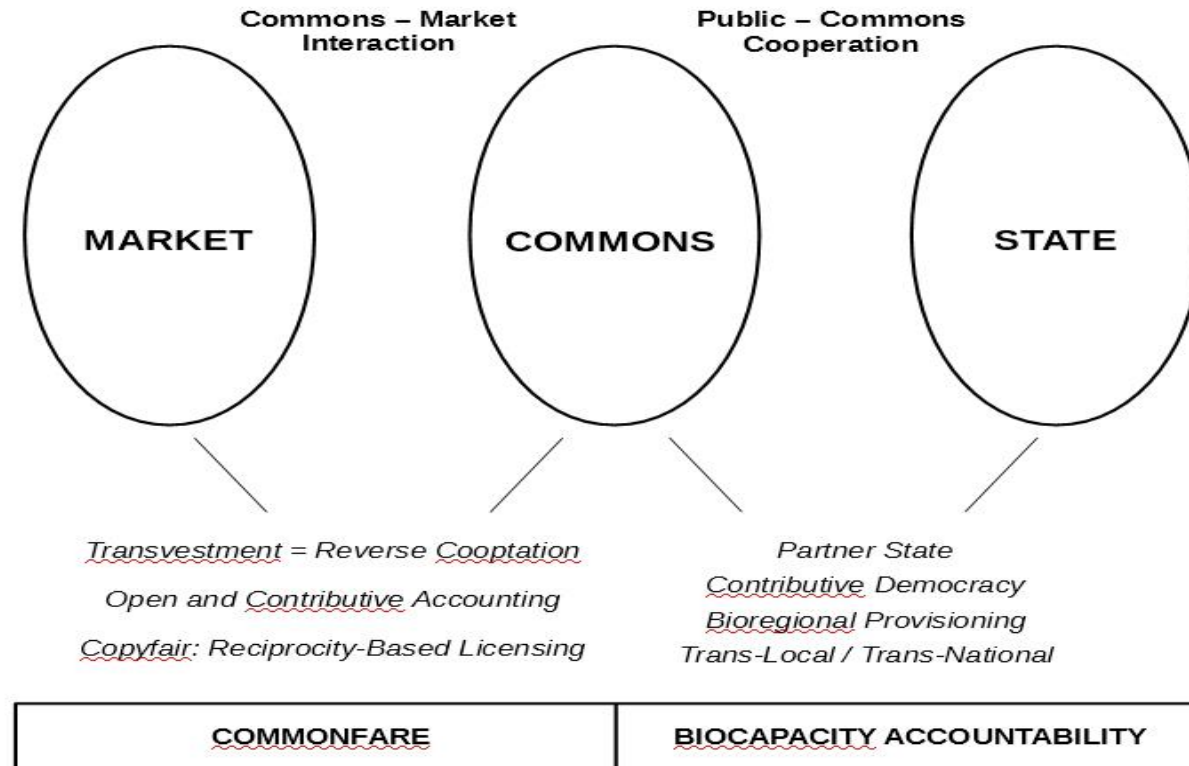
Michel Bauwens

<https://wiki.p2pfoundation.net>

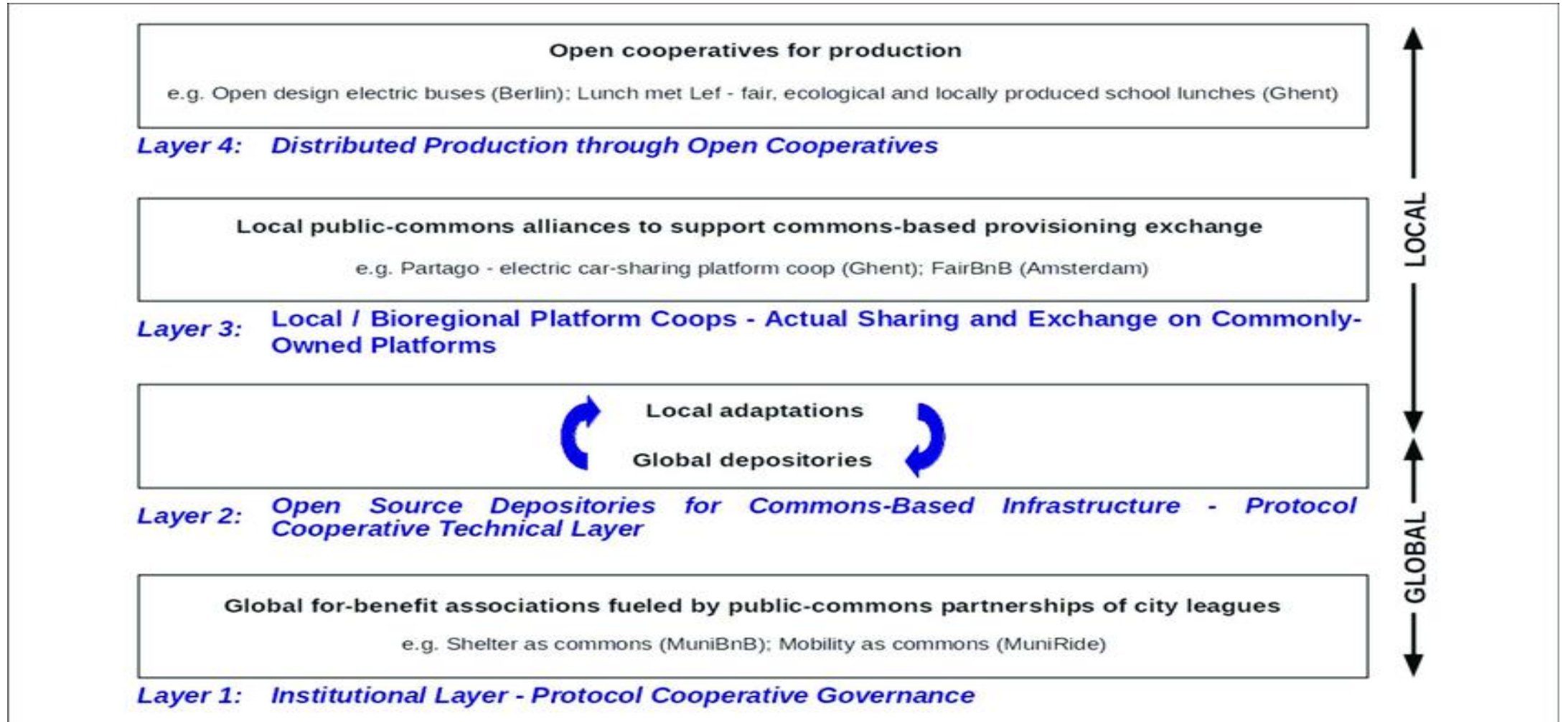
Four emerging economic models



Not a binary, but a triarchy



Public Policies in favour of commons-centric territorial development



The Cosmo-Local Model

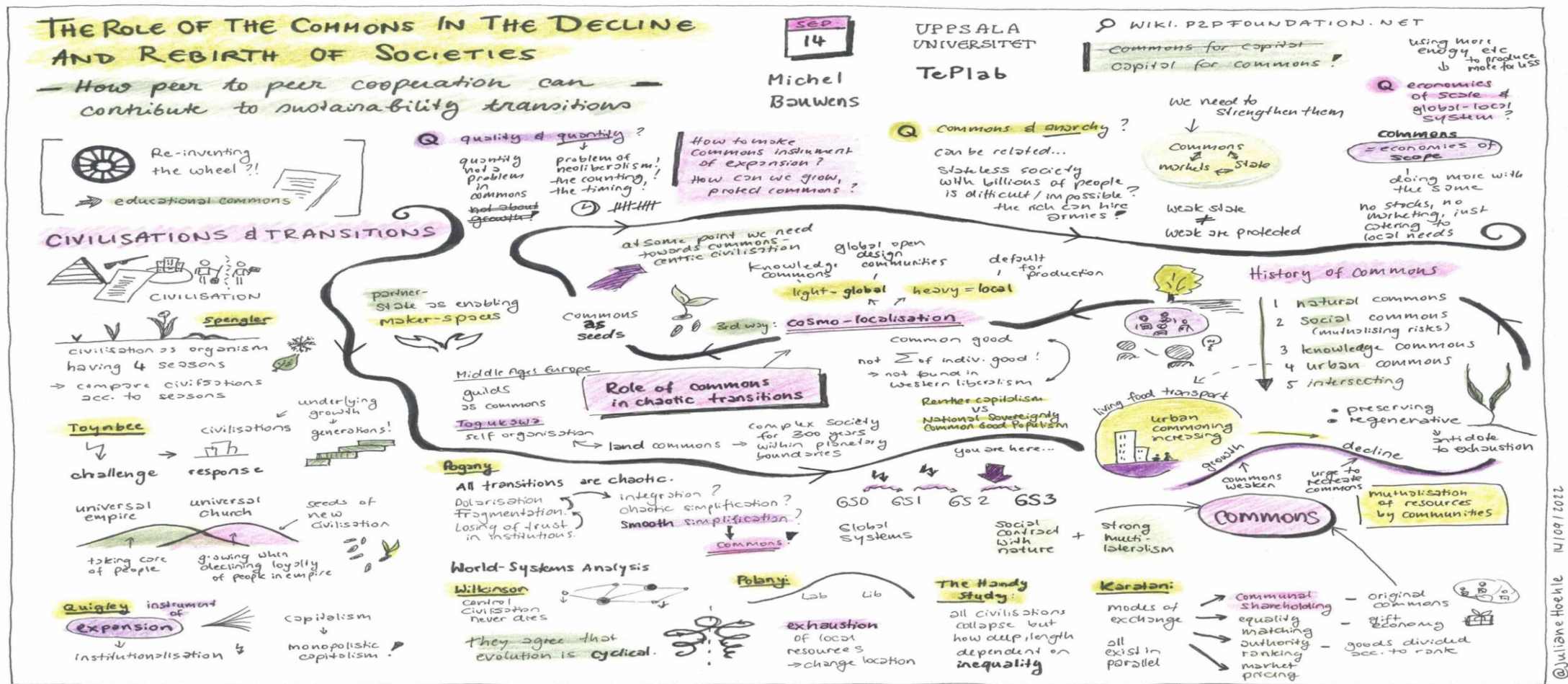
	Traditional manufacturing enterprise	Distributed manufacturing enterprise (neo-liberal global factory)	Cosmo-localization
IP / knowledge sharing regime	Held by one company	Held by one company or consortium (e.g. Apple)	Shared under open or CC or Peer Production license etc.
Location of manufacturing	A single or local manufacturing center	Global factory, wherever the product can be most cheaply and effectively produced, elements of product can be produced	Globally distributed networks of localized manufacturing, depending on take up and use of global design commons
Transport and trade	Product sent from local manufacturing centers to other places	Parts move across many countries and once assembled are shipped for trade	Requires development of localized production ecosystems for complex manufacturing, Micro-manufacturing clusters
Enterprise model	Publically Listed Corp., Family Owned Corp., Nationalized Corp.	Corporation or consortium with complex supply and distribution ecosystem	Open value network model, ³ Platform Cooperatives, Maker Spaces, Phyles / Trans-national collectives

Review of attempts to create more resilient ecosystems

Summary of the Cooperative Forms for a Commons-centric Economy



The pulsation of the commons in world history





Vlaanderen
verbeelding werkt

TURNING THE TIDE

Cultural infrastructure as commons

Gastspreeker: Iva Čukić

oprichter Ministry of Space

TURNING THE TIDE: CULTURAL INFRASTRUCTURES AS COMMONS

dr IVA ČUKIĆ



CULTURE TALKS - COMMONS

Flemish Government and the Antwerp Research Institute for the Arts (ARIA – Antwerp University)

December 2022, Antwerp

MINISTARSTVO PROSTORA / MINISTRY OF SPACE (2011)

- URBAN COMMONS
 - PUBLIC PROPERTY MANAGEMENT AND GOVERNANCE
 - URBAN AND SPATIAL PLANNING / PARTICIPATION IN DECISION-MAKING
 - AFFORDABLE HOUSING
 - CLIMATE JUSTICE

PRACTICE | RESEARCH | EDUCATION

WWW.MINISTARSTVOPROSTORA.ORG

“THIRD APPROACH” TO THE STATE-MARKET DICHOTOMY IN TERMS OF GOVERNANCE, AND THE PUBLIC-PRIVATE DICHOTOMY IN TERMS OF PROPERTY.

THE PRACTICES OF GOVERNING RESOURCES BY COMMUNITIES

THE STRUGGLES AGAINST A WAVES OF COMMODIFICATION, PRIVATISATION AND STATISATION OF RESOURCES - POLITICAL ACT OF CLAIMING COMMONS THROUGH CONFLICT AGAINST COMMODIFICATION, COMMERCIALISATION, PRIVATISATION AND STATE ENCLOSURE OF GOODS FOR THE BENEFIT OF FEW.

/OSTROM, DE MOOR, MATTEI, HARVEY, STAVRIDES, FEDERICI, DE ANGELIS/



RESOURCES GOVERNED BY THE COMMUNITY OF THE RESOURCE’S USERS

THREE ELEMENTS IN A MUTUAL RELATIONSHIP

ELEMENTS OF COMMONS	GOVERNANCE	TERMINOLOGY OF COMMONS
RESOURCE	OBJECT	COMMON GOOD
COMMUNITY	SUBJECT	COMMONER
INSTITUTIONS	REGIME	COMMONING

CRITICAL THEORY: PROGRESSIVE COMMONS & NORMATIVE DIMENSION

NORMATIVE DIMENSION

NORMATIVE CRITERIA	ELEMENTS OF COMMONS	PROGRESSIVE VALUE
SUSTAINABLE USE	RESOURCE	MATERIAL, FINANCIAL & ECOLOGICAL SUSTAINABILITY
FAIR ACCESS	COMMUNITY	SOCIAL JUSTICE
COLLECTIVE CONTROL	INSTITUTIONS	DEMOCRACY

FEMINIST PERSPECTIVE

TRANSFORMATION OF REPRODUCTION AND EVERYDAY LIFE

GENDER PERSPECTIVE

SPACES OF COMMONING

SOCIALLY DEFINED, RATHER THAN BEING A RESOURCE SIMPLY SHARED BY A GROUP OF PEOPLE.

... a shared space that people shape according to their needs and aspirations. Rules on how it is going to be shared and managed are developed through the process of transforming the space into commons [...]

the emancipatory potentiality of urban commons is both a concrete product of collectively developed rules of sharing and of the crucial means through which these rules take shape and shape those who shape them (Stavrides 2016)

CASE OF BELGRADE



ULIČNA GALERIJA / STREET GALLERY



CULTURAL CENTER MAGACIN

ulična galerija









**BELGRADE
SUBOTICA
NOVI PAZAR
NIŠ
NOVI SAD
VALJEVO
KRAGUJEVAC
ŠABAC
VRANJE**





km magacin 4/6/8



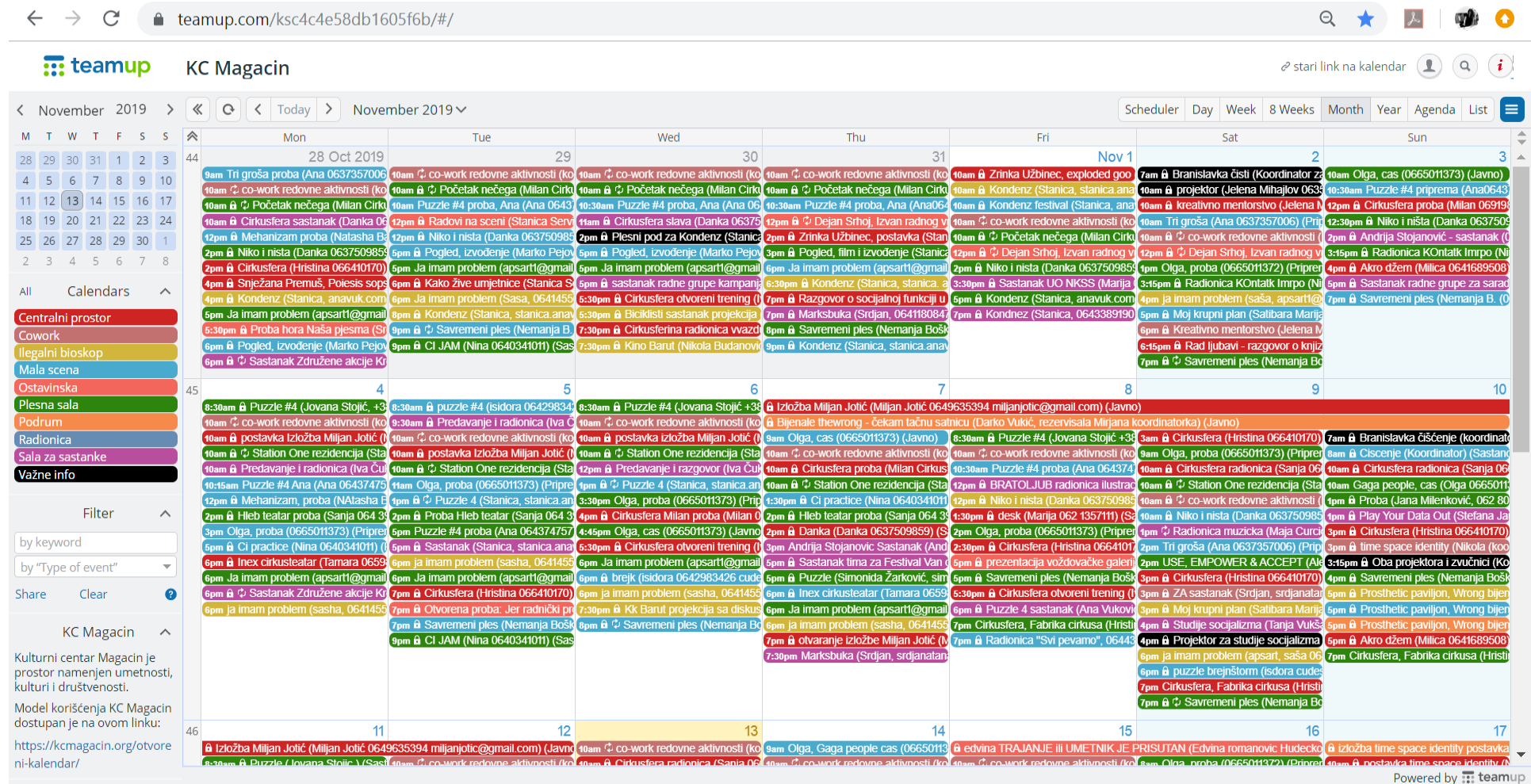
resource

8

6

4

open calendar model





4



4





4



4





4



4



6



6



8





8





GOVERNANCE

- **MANAGING BODIES:** MAGACIN USERS' ASSEMBLY AND THE MAGACIN COORDINATING BODY
 - TYPE OF USERS:
 - REGULAR USERS (USERS' ASSEMBLY)
 - OCCASIONAL USERS
- **OPERATING BODIES** ARE ALL ROTATING FUNCTIONS THAT ARE PERFORMED BY INDIVIDUALS FROM AMONG REGULAR USERS WHO APPLY FOR THE FUNCTION.
 - OPERATING BODIES:
 - COORDINATOR
 - TECHNICAL MAINTENANCE
 - PR
 - PHOTO TEAM
- **WORKING GROUPS**



VALUES, PRINCIPLES AND PROGRAMME PRIORITIES

- **THE VALUES OF MAGACIN**
 - JOINT MANAGEMENT AND COOPERATION
 - EQUALITY AND JUSTNESS
 - PROFESSIONALISM AND RESPONSIBILITY
 - PARTICIPATION
 - COOPERATION
 - AVAILABILITY
 - FINANCIAL TRANSPARENCY
 - RESPECTING PERSONAL AUTONOMY OF WORK AND ARTISTIC (CULTURAL) CREATION
 - SOCIAL CHANGE
- **UNACCEPTABLE BEHAVIOURS AND PROGRAMMES:**
 - DISCRIMINATION
 - HARASSMENT
 - RELIGIOUS PROGRAMMES
 - POLITICAL PARTIES
 - PRIVATIZATION OF THE SPACE
 - PROFIT MAKING

PROGRAMME PRIORITIES:

1. PUBLIC PROGRAMMES
2. WORK-PRODUCTION PROGRAMMES
3. PROGRAMMES DESIGNED FOR A SMALLER GROUP OF USERS

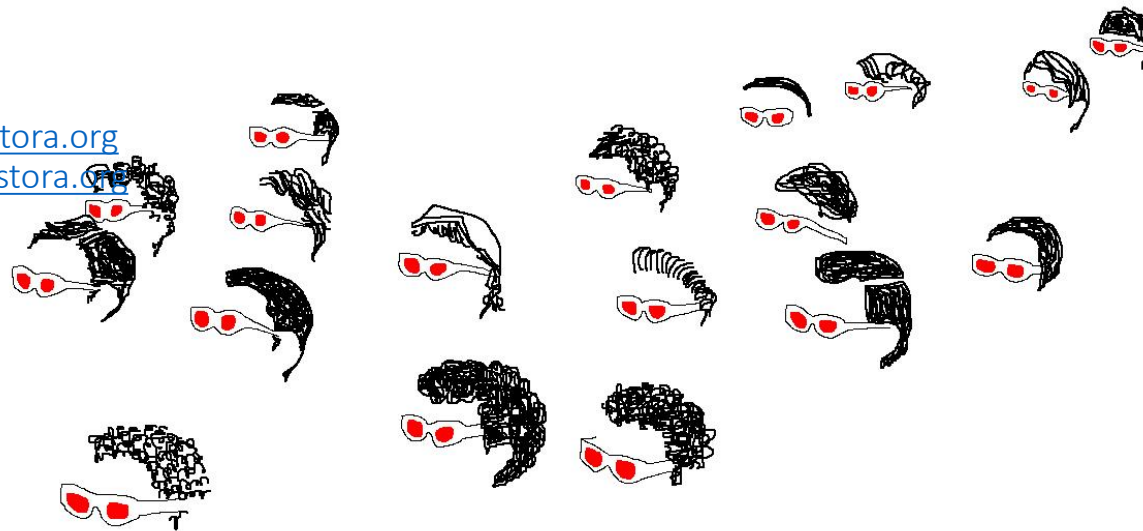
THANK YOU

IVA ČUKIĆ

cukic.iva@gmail.com

iva@ministarstvoprostora.org

www.ministarstvoprostora.org



CULTURE TALKS - COMMONS

Flemish Government and the Antwerp Research Institute for the Arts (ARIA – Antwerp University)

December 2022, Antwerp



Vlaanderen
verbeelding werkt

CULTURE TALKS

COMMONS

Antwerpen | 6 december 2022

DEPARTEMENT
CULTUUR, JEUGD & MEDIA

www.vlaanderen.be/culturetalks